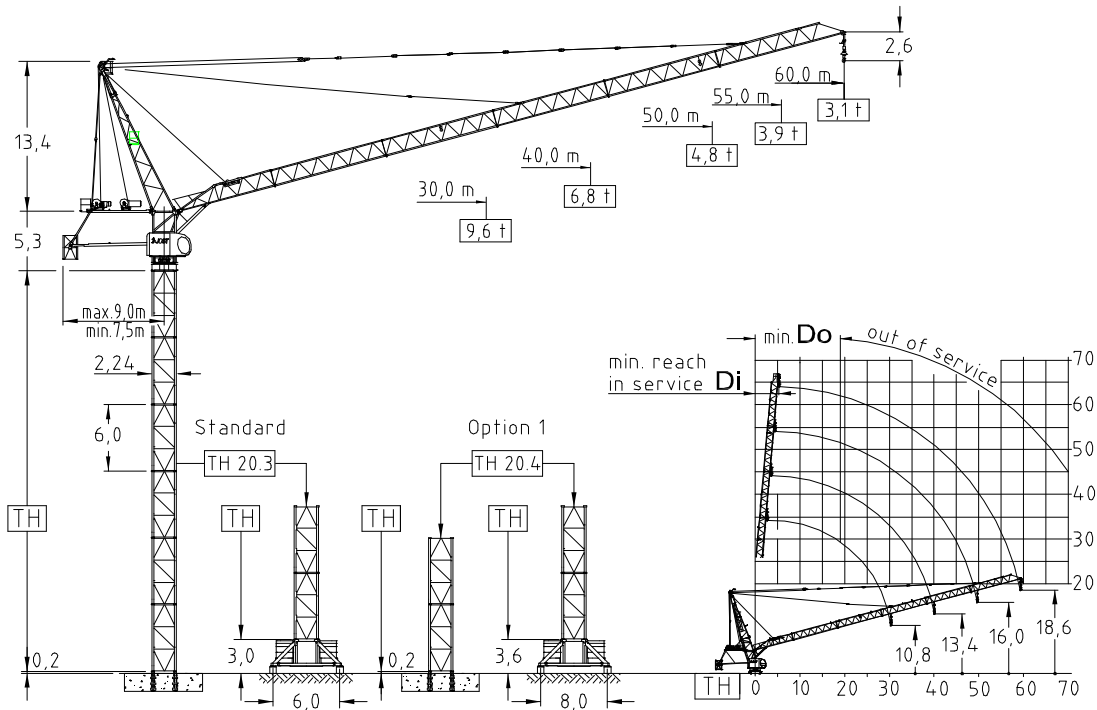


1.3 Specification sheet



Jib (m)	Jib reach (m)		Tower heights all data in (m)			
			Standard Tower		Option 1	
			Foundat.	Chassis	Foundat.	Chassis
	Di	Do	TH 20.3	UC 6,0-20.3	TH 20.4	UC 8,0-20.4
30,0	3,0	19,0	51,0	39,0	63,0	51,0
40,0	4,0	19,0	45,0	33,0	57,0	45,0
50,0	5,0	19,0	42,0	30,0	51,0	39,0
55,0	5,5	19,0	36,0	24,0	48,0	36,0
60,0	6,0	19,0	36,0	24,0	48,0	36,0

EN 14439 : 2008
WIND C 25
ISO 9001 : 2008

Transport		
	Truck	Cont.
Top crane	6	7
Tower 2 units	1	1
Climbing	2	2
Chassis	1	1

Radius & Capacity													
Jib (m)	rope	max. Load (t)	Jib reach (m)										
			20	22	25	30	35	40	45	50	55	60	
60,0	☺	8,0	24,8	8,00	8,00	7,87	6,82	5,94	4,90	4,33	3,83	3,44	3,10
	☹	-	-	-	-	-	-	-	-	-	-	-	-
55,0	☺	8,0	28,0	8,00	8,00	8,00	7,42	6,32	5,84	4,84	4,33	3,90	-
	☹	-	-	-	-	-	-	-	-	-	-	-	-
50,0	☺	8,0	30,8	8,00	8,00	8,00	8,00	7,00	6,07	5,37	4,80	-	-
	☹	16,0	15,4	12,13	10,89	9,62	7,90	6,70	5,77	5,07	4,50	-	-
40,0	☺	8,0	34,3	8,00	8,00	8,00	8,00	7,81	6,80	-	-	-	-
	☹	16,0	17,2	13,62	12,31	10,76	8,86	7,51	6,50	-	-	-	-
30,0	☺	8,0	30,0	8,00	8,00	8,00	8,00	-	-	-	-	-	-
	☹	16,0	18,5	14,71	13,30	11,65	9,60	-	-	-	-	-	-

Hoist 55,0 kW FI							
☺	t	1,5	2,8	5,0	6,2	7,2	8,0
	m/min	10,4	8,2	6,2	5,4	4,2	3,0
☹	t	3,0	5,6	10,7	12,4	14,2	16,0
	m/min	5,2	4,1	3,1	2,7	2,1	1,5
Drum capacity						1140,0 m	

Hoist 75,0 kW FI							
☺	t	2,8	3,6	5,2	6,2	7,0	8,0
	m/min	14,0	12,0	9,0	7,6	6,0	4,2
☹	t	5,6	7,2	10,4	12,4	14,0	16,0
	m/min	7,0	6,0	4,5	3,8	3,0	2,1
Drum capacity						950,0 m	

Motor	30,0 kW FI	2 x 4,4 kW	4 x 5,0 kW
t/v	2,10 min	0,67 rpm	25,0 m/min
Power requirement		Hoist 55,0 kW	130 kVA
Upper part		Hoist 75,0 kW	180 kVA

Power requirement
400V (±10%) - 50Hz

Counter weight	
Block 1	5 x 3,4 t
Block 2	1 x 6,0 t
Total	23,0 t

Ropes		
	D (mm)	N/mm ²
Hoist	16,0	1960
Luffing	16,0	1960

JOST Cranes GmbH & Co. KG
Brefonischer Ring 18
85630 Grasbrunn
Germany
Fon +49-89-454525-18
Cell +49-89-454525-63
Mail info@jostcranes.de
Web www.jostcranes.de