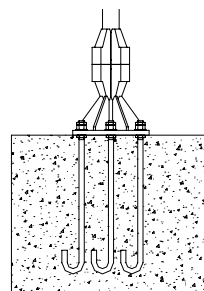
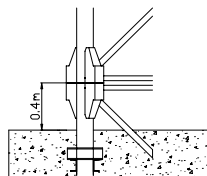
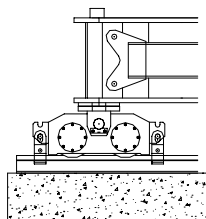
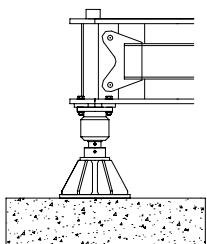
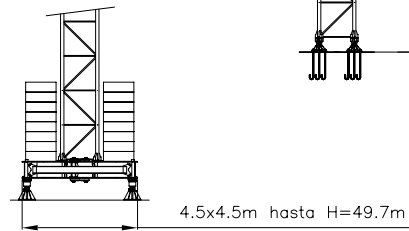
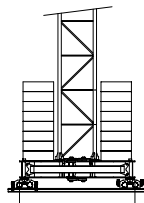
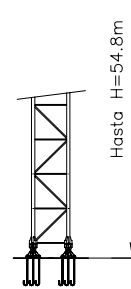
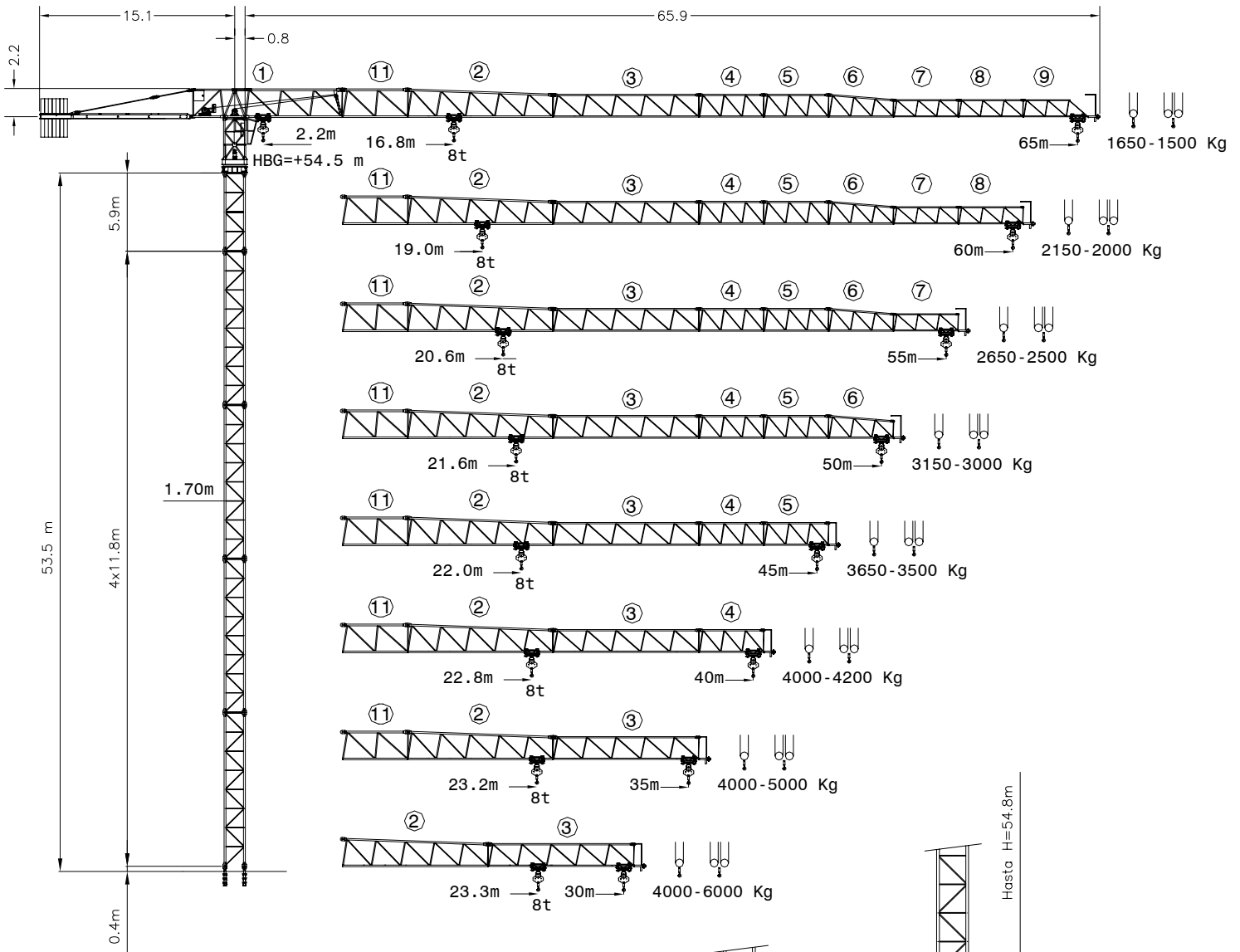


S-65

4 - 8 ton

GRÚA TORRE
TOWER CRANE
GRU A TORRE

SAEZ



A

B

C

D

UNE 58-101-92
FEM 1001-87 Gr. A3
DIN 15018 Gr. B3
Conforme con la directiva 98/37/CE
According to EC 98/37 instruction
Conforme alla direttiva 98/37/CE

DIN/FEM






S-65



4 - 8 ton

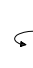
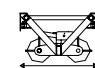
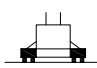
GRÚA TORRE TOWER CRANE GRU A TORRE



SAEZ

	Alcance Radius Sbraccio (m)	Campo de Carga Max. Max swl range Campo di carico mass. 4000 Kg	65	60	55	50	45	40	35	30	25	20	15	10
			4000 kg 	65	2.1-31.5	1650	1830	2050	2310	2630	3030	3540	4000	4000
60	2.1-38.8			2150	2400	2690	3050	3510	4000	4000	4000	4000	4000	4000
55	2.1-35.7				2650	2970	3360	3860	4000	4000	4000	4000	4000	4000
50	2.1-40.7					3150	3560	4080	4000	4000	4000	4000	4000	4000
45	2.1-40.0						3650	4000	4000	4000	4000	4000	4000	4000
40	2.1-35.0							4000	4000	4000	4000	4000	4000	4000
35	2.1-30.0								4000	4000	4000	4000	4000	4000
30	2.1-30.0									4000	4000	4000	4000	4000

	Alcance Radius Sbraccio (m)	Campo de Carga Max. Max swl range Campo di carico mass. 8000 Kg	65	60	55	50	45	40	35	30	25	20	15	10
			4000 kg  8000 kg 	65	2.1-16.8	1500	1680	1900	2160	2480	2880	3390	4090	5070
60	2.1-19.0			2000	2250	2540	2900	3360	3940	4730	5850	7540	8000	8000
55	2.1-20.6				2500	2820	3210	3710	4350	5210	6420	8000	8000	8000
50	2.1-21.6					3000	3410	3930	4610	5510	6780	8000	8000	8000
45	2.1-22.0						3500	4030	4720	5640	6940	8000	8000	8000
40	2.1-22.8							4200	4910	5860	7210	8000	8000	8000
35	2.1-23.2								5000	5970	7340	8000	8000	8000
30	2.1-23.3									6000	7380	8000	8000	8000


CARGA / VELOCIDAD (kg/m/min) LOAD / SPEED - CARICO / VELOCITA'	
Potencia / Power / Potenza	45 Hp (33 Kw) 3 vel
	4000 kg - 11 m/min 4000 kg - 45 m/min 2000 kg - 90 m/min
	8000 kg - 4.5 m/min 8000 kg - 22.5 m/min 4000 kg - 45 m/min

MECANISMOS MECHANISMS / MECCANISMI		
		
0.3 - 0.6 - 0.9 rpm	11/37/75 m/min	12 / 24 m/min
2 x 65 Nm	3Kw	4 x 3Kw

*** CARGA / VELOCIDAD (kg/m/min) LOAD / SPEED - CARICO / VELOCITA'	
Potencia / Power / Potenza	45 Hp (33 Kw) CC
	4000 kg - 0 ÷ 40 m/min 3000 kg - 0 ÷ 60 m/min 2000 kg - 0 ÷ 80 m/min 1250 kg - 0 ÷ 120 m/min
	8000 kg - 0 ÷ 20 m/min 6000 kg - 0 ÷ 30 m/min 4000 kg - 0 ÷ 40 m/min 2500 kg - 0 ÷ 60 m/min

Alcance / Radius / Sbraccio		65	60	55	50	45	40	35	30
Contrapeso Aéreo Counterweight Contrappeso	Tipo	A	A	A B	A B	A B	A	A B	A B
	Nº	8	8	7 1	6 2	6 1	6	4 2	3 2
	Kgs	20000	20000	19000	18000	16500	15000	13000	10500

*** OPCIONAL
OPTIONAL
OPZIONALE

Lastre de la Base Base Ballast blocks Zavorra alla base		H (m)	20.2	23.2	26.1	29.1	32	35	37.9	40.9	43.8	46.8	49.8
	Ton	83.6	83.6	83.6	91.2	91.2	91.2	91.2	102.6	102.6	121.6	121.6	

PESO DE CONSTRUCCIÓN APROXIMADO DEAD WEIGHT APPROX. / PESO DI COSTRUZIONE APPROSSIMATO		46.000 Kg
POTENCIA REQUERIDA Y CONDUCTORES Required Power and Conductors Potenza elettrica necessaria e conduttori	Con Elevación 33 Kw / 33 Kw Hoisting / Con Sollevamento 33 Kw	
	55 KVA - 380 V - 50 Hz	
	25 m	50 m
	100 m	
	4x35mm ²	4x35mm ²
		4x35mm ²

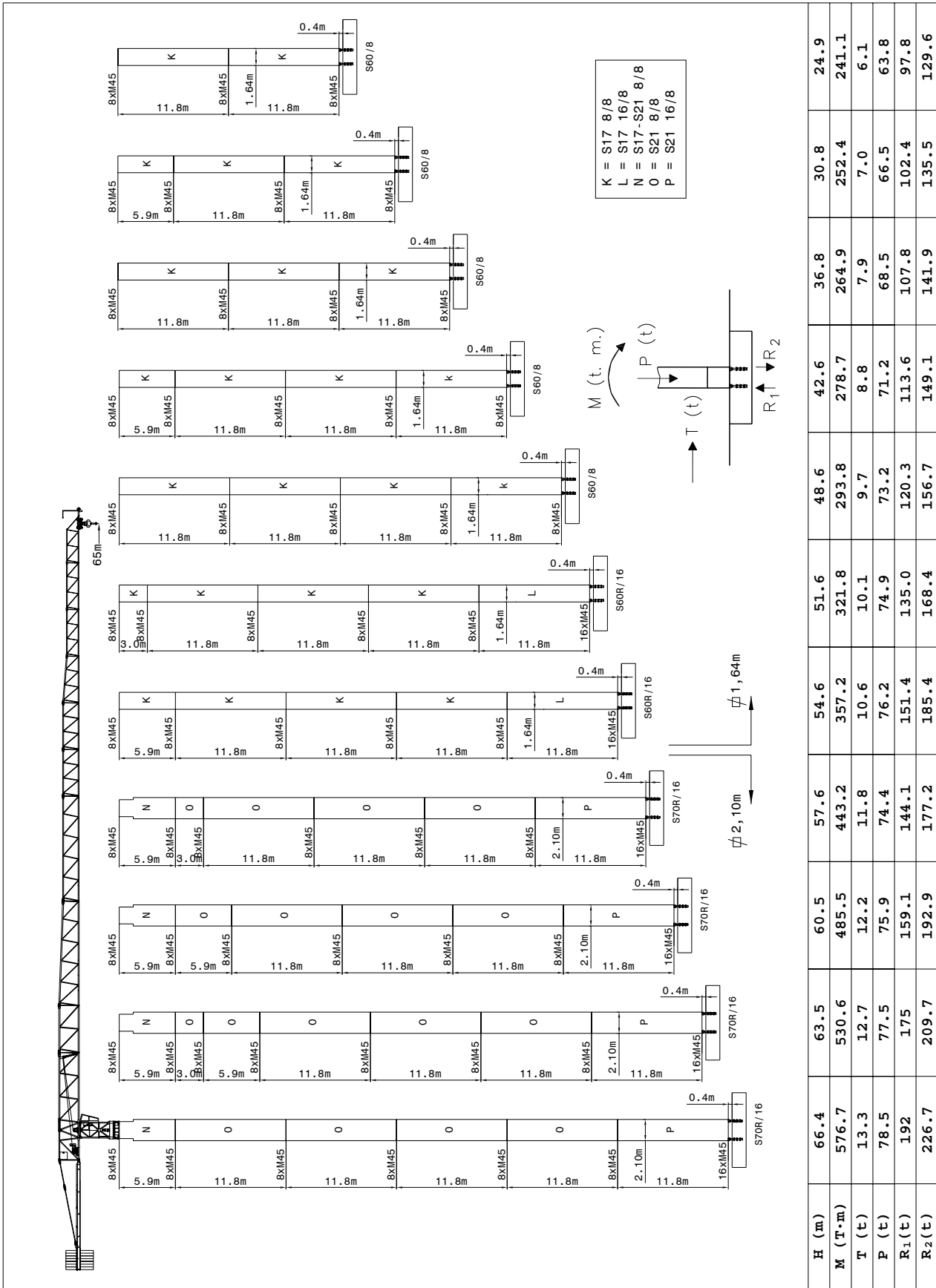
S-65

4 - 8 ton

GRÚA TORRE TOWER CRANE GRU A TORRE



COMPOSICIÓN DE TORRE / TOWER COMPOSITION / STRUTTURA DELLA TORRE

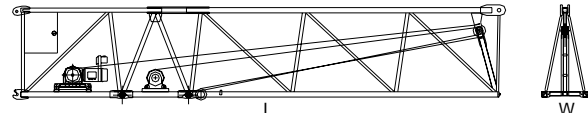
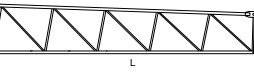
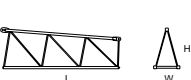
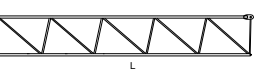

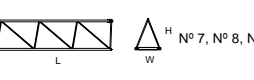

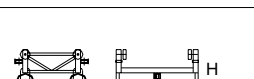
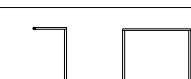
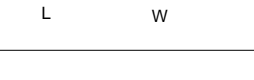
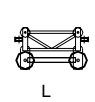
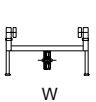
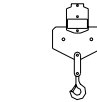
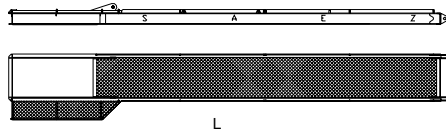
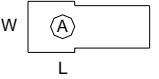
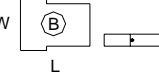
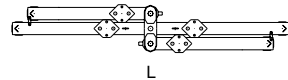
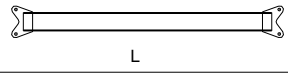
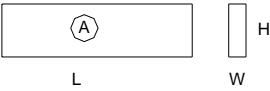
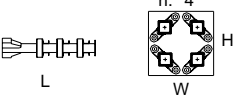

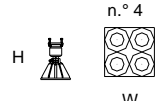
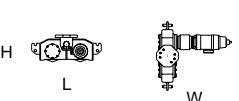
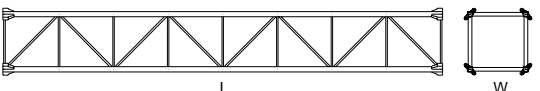
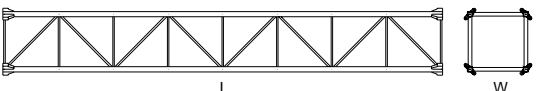
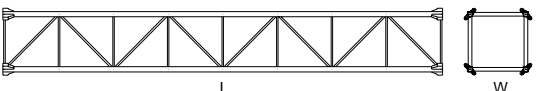
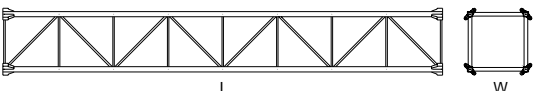
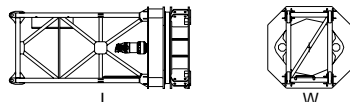



S-65

4 - 8 ton

GRÚA TORRE TOWER CRANE GRU A TORRE

SAEZ

PESO Y DIMENSIONES DE LOS ELEMENTOS DE LA GRUA WEIGHT AND DIMENSIONS OF THE CRANE / PESO E DIMENSIONI DEI ELEMENTI DELLA GRU		L (m)	W (m)	H (m)	Peso (Kg)	
ELEMENTO DE PLUMA Nº 1 JIB HEEL SECTION ELEMENTO DI BRACCIO Nº1		11,90	1,25	2,30	5800	
ELEMENTOS DE PLUMA DEL Nº 2 AL Nº 9 Y Nº11 JIB SECTIONS FROM 2nd TO 9th AND 11th ELEMENTO DI BRACCIO DI 2º- Nº 9 E Nº11		2	11,60	1,13	2,25	2145
		3	11,60	1,13	1,80	1676
		4	5,30	1,13	1,80	596
		5	5,30	1,13	1,80	516
		6	5,30	1,13	1,80	444
		7	5,30	1,13	1,45	410
		8	5,30	1,13	1,45	320
		9	5,15	1,13	1,40	238
		11	5,15	1,13	2,25	1275
	CARRO - GANCHO Y PUNTA TROLLEY - HOOK - JIB END CARRELLO, GANCIO E PUNTA		1,20	1,35	0,80	276
			0,80	0,15	1,50	316
		0,80	1,20	1,40	75	
CONTRAPLUMA COMPLETA COUNTER JIB CONTROBRACCIO		11,94	1,80	0,60	2840	
BLOQUE DE CONTRAPESO COUNTERWEIGHT BLOCKS BLOCCO DI CONTRAPPESO		3,20	1,25	0,29	2500	
		1,83	1,25	0,29	1500	
BASE CRUCIFORME 4,5 X4,5 CROSSBASE 4,5 X 4,5 CARRO BASE 4.5 X 4.5		6,70	1,10	1,20	5900	
VIGAS AUXIL. DE BASE HALF BASE BEAMS TRAVI DI CONGIUNZIONE		4,40	0,30	0,55	450	
BLOQUE LASTRE DE BASE BASE BALLAST BLOCKS BLOCCO DI ZAVORRA ALLA BASE		4,40	0,30	1,20	3800	
ELEMENTO EMPOTRE FOUNDATION ANCHOR EL ANNEGARE ELEMENTOS ATORNILLADOS TIED SECTIONS EL RECUPERABILE		1,50	0,70	0,70	750	
		1,35	1,35	0,60	1150	
NIVELADORES LEVELLERS PIEDI REGOLABILE TRASLACION TRAVELLING BOGIES TRASLAZIONE		1,20	1,20	0,90	1150	
		1,15	1,25	0,45	800	
ELEMENTO DE TORRE TL16 TOWER SECTIONS TL16 ELEMENTO DI TORRE		TL16	11,80	1,85	1,85	4600
		TR16	11,80	1,85	1,85	5740
		TS16	5,95	1,85	1,85	2450
		TC16	3,00	1,85	1,85	1380
UNIDAD DE ROTACION COMPLETE SLEWING UNIT ROTAZIONE		4,40	2,00	2,00	6600	
CABINA Y SOPORTE CABIN AND SUPPORT CABINA E SUPPORTO		3,00	1,15	2,35	500	

Sistemas Forza, S.L. Ctra. de Beniján, Km. 5 – Beniján – MURCIA (España)

Tlf.: (+34) 968 83 70 81 – Fax: (+34) 968 83 70 82

forza@forzasi.com • www.forzasi.com

Sujeto a modificaciones / Subject to modifications! / Si fa riserva di modifiche!

Declinamos toda responsabilidad derivada de la información proporcionada

This information is supplied without liability /

Le indicazioni contenute si intendono salvo errori ed omissioni